

A woman with long dark hair is sitting on a wooden chair in a rustic, industrial-style setting. She is wearing a brown, textured coat over a black turtleneck and black pants. The background features a weathered wall, a hanging light bulb, and a large speaker system on the right. The overall mood is moody and atmospheric.

AYASSE


AUTUMN | WINTER 2025

NU NC HI

THE CONCEPT OF BEING
PERCEPTIVE AND
ATTENTIVE TO DETAILS

*It's about stepping back, approaching your
surroundings with mindfulness, and contributing to a
harmonious coexistence.*



A woman with long dark hair, wearing a white, textured dress, stands in a dimly lit room. She is positioned in the center-left of the frame, looking towards the right. The room has a rustic, textured wall and a window with a black frame on the right side. Light streams in from the window, creating a soft glow and highlighting the woman's hair and dress. The overall mood is contemplative and serene.

AWARENESS OF YOUR
OWN SELF, YOUR OWN
PERSPECTIVE, AND YOUR
OWN STRENGTH.

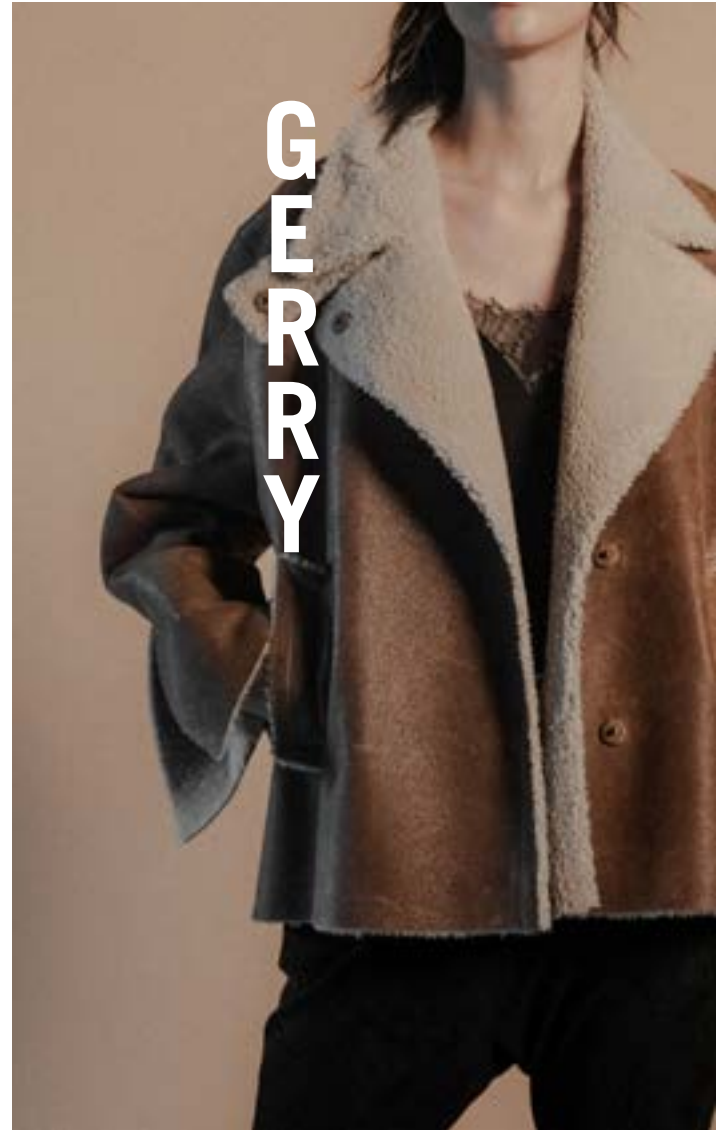


PATTY



JOSY





GERRY







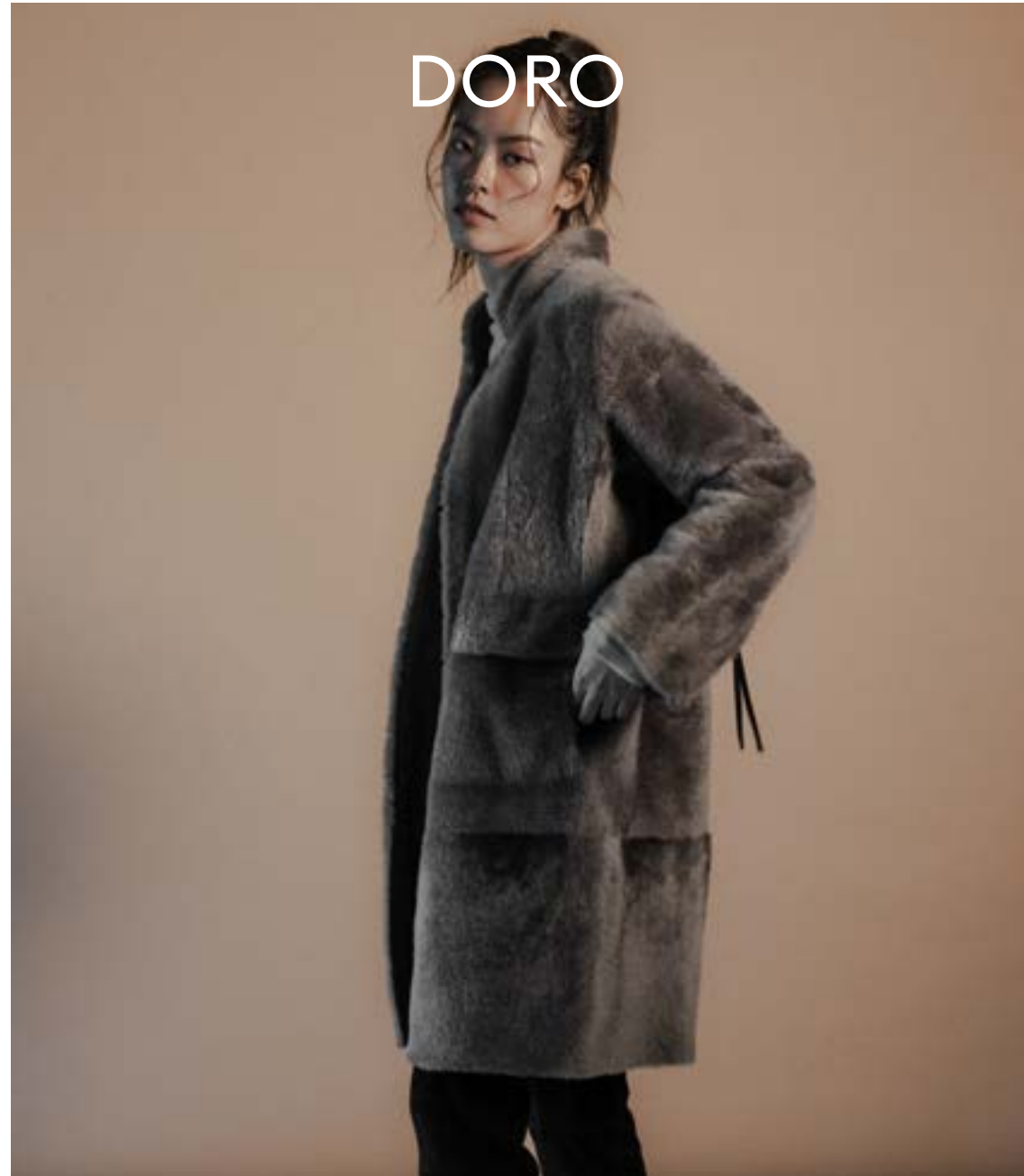
SARAH





MARIA









ARDEN





ARDEN









PAUL





TRINE



MOLLÜ







VERA



VERA





CORA





FLORA







FLORA







AYASSE

STUDIO AYASSE GMBH | KÖNIGSTR 27 | 70173 STUTTGART
39, JANGMUN-RO 9-GIL, YONSAN-GU, 04392 SEOUL
WWW.STUDIO-AYASSE.COM | MAIL@STUDIO-AYASSE.COM